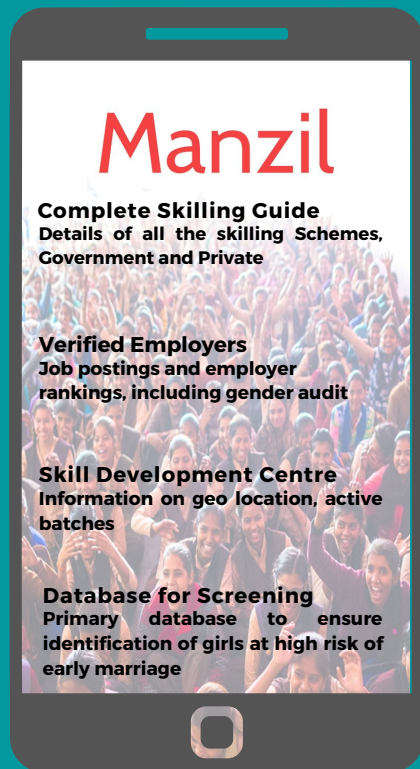


Manzil Application (MAP)

Manzil Application (MAP) is the project's cutting edge monitoring and decision making tool. MAP allows girls to make their own choices on skill courses and job opportunities through a three way matching approach. MAP's unique features make it a one stop solution for implementors, beneficiaries and employers.



"From being technology phobic to now, when I can't operate without MAP. I don't need to carry any notebooks. All my activities are tracked in MAP. I track around 600 girls across 20 villages. I have enrolled 120 girls into skill courses, directly through this application."

Archana, Community Motivator

Collaborate With Us

Skilling Centres: Our team of field motivators work at ground level to mobilize young girls from marginalized communities.

Corporates and private sector employers: We match the aspirations of young girls to industry requirements ensuring job retention. We also ascertain essential requirements and provide the best qualified and trained professionals for recruitment.



IPE Global Limited
Delhi Office: IPE Global House, B-84, Defence Colony, New Delhi-110024
Jaipur Office: IPE Global Limited, 10, 3rd Floor, Signature Tower, Lal Kothi
Udaipur Office: IPE Global Limited, Nahar Niwas, 8, Pratap Marg, near Shiksha Bhawan Circle, Udaipur
Dungarpur Office: IPE global Ltd. C/o Deepak Sharma, Gandhi Ashram, behind Avinash Motors, New Colony, By pass road Dungarpur
Telephone: +91 11, 40755900, +91-8233700233

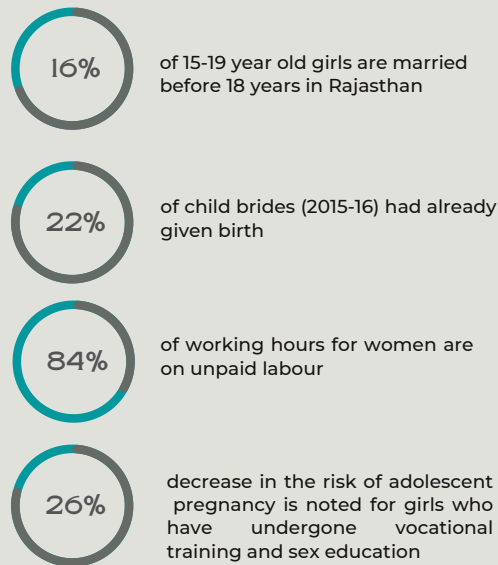
Our Partners



Manzil

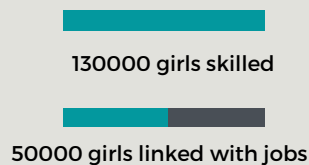
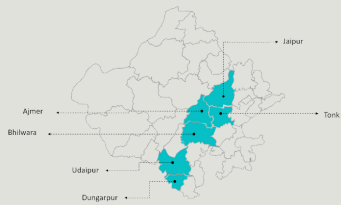
Empowering Girls Through Market Driven Vocational Skills

Need for Manzil



The Project

Manzil enables access of young girls (14-21 years) to quality vocational education and economic opportunities for increasing their agency to act independently and make their own choices. This allows prevention of early marriages and subsequently delays first pregnancies. The project is being implemented in 6 districts, including 180 schools, across Rajasthan.



Sources:
National Family Health Survey (NFHS-4), 2015-16
Time use in India 2019, National Statistics Office
Bandiera et al, Washington DC, USA, World Bank 2012

Strategy & Approach

The project adopts a life cycle approach to skilling and jobs. It aligns girls' aspirations to market based skill gaps and equips them with transferable skills such as communication, problem solving and decision making. It also ensures retention in skill courses and connects these girls to jobs that will provide them career shaping growth opportunities. Manzil's strong foundation is community-based.



IDENTIFY MARGINALIZED YOUNG GIRLS



COUNSEL GIRLS AND THEIR FAMILIES



FACILITATE ENROLMENT OF GIRLS IN SKILL COURSES

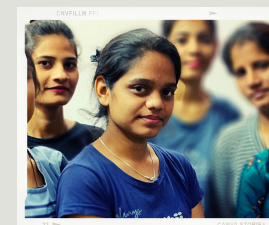
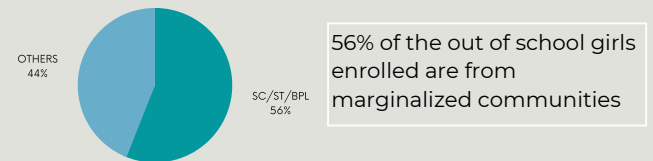
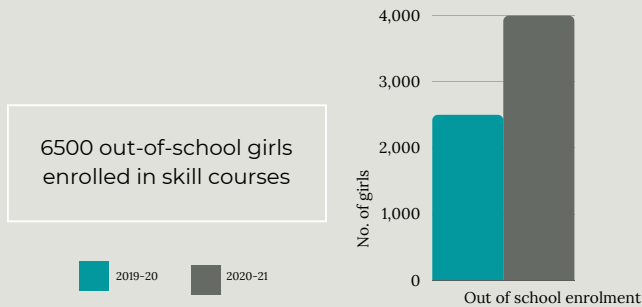
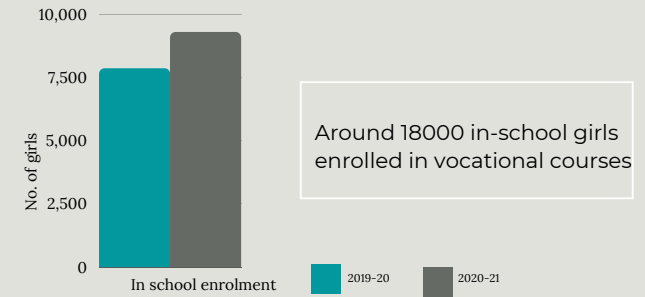


ENSURE JOB READINESS THROUGH EMPLOYABILITY SKILLS TRAINING



LINK GIRLS TO EMPLOYERS

Manzil's Impact



"I did a General Duty Assistant (GDA) Course from Bhilwara. I set foot outside my village for the first time to work at a hospital in Jaipur. Despite the pressure for marriage from my parents, I now have the confidence to take my own decisions."

Kashish (18 years)



Manzil's changemakers have not always been young girls. Unkar Dangi, the 81 year old, from Kjarbadiya village in Udaipur fought to send his grand daughters to Jaipur from Udaipur for a field executive course.